

PART OF THE N.W.1/4 OF S.W.1/4, OF SEC. 16, T.6N., R.1W., S.L.B. & M.

TAXING UNIT: 25

IN OGDEN CITY  
SCALE 1" = 100'

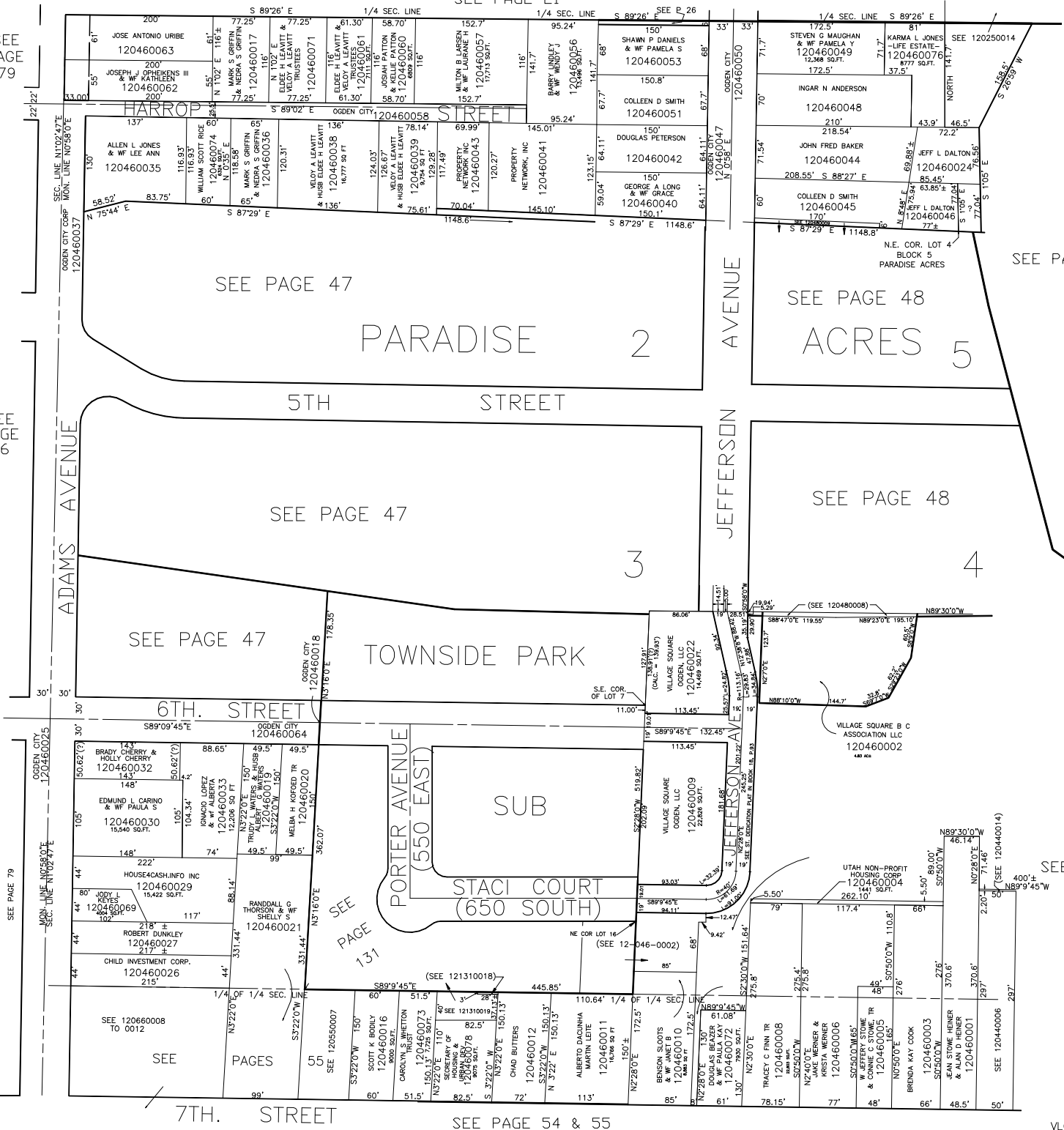
SEE PAGE 21

SEE PAGE 79

SEE PAGE 56

SEE PAGE 44

SEE PAGE 44



SEE PAGE 47

PARADISE 2 ACRES 5

5TH STREET

SEE PAGE 47

SEE PAGE 48

SEE PAGE 47

TOWNSIDE PARK

6TH STREET

SUB

STACI COURT (650 SOUTH)

PORTER AVENUE (550 EAST)

VILLAGE SQUARE B C ASSOCIATION LLC 120460002

BRADY CHERRY & HOLLY CHERRY 120460032

EDMUND L. CARINO & Wf PAULA S 120460030

HOUSE4CASH.INFO INC 120460029

JODY L. KEYES 120460069

ROBERT DUNKLEY 120460027

CHILD INVESTMENT CORP. 120460026

SEE 120660008 TO 0012

SEE PAGES

SEE PAGE 131

7TH STREET

SEE PAGE 54 & 55